

15th March 2010

BMT unveils new Fast Landing Craft design

BMT Nigel Gee Ltd and BMT Defence Services Ltd, subsidiaries of BMT Group Ltd, the leading international maritime design, engineering and risk management consultancy, have unveiled their new design for a highly capable Fast Landing Craft (FLC).

Contracted by Defence Equipment & Support (DE&S) the BMT team developed a novel, tri-bow monohull platform using a parent hull-form derived from an internal BMT research and development programme, which included model tests to optimise performance.

Ed Dudson, Technical Director at BMT Nigel Gee, says: "Sized to occupy a similar footprint to the existing LCU Mk10 and thus capable of operating with UK amphibious support vessels, our innovative design meets the demanding UK Ministry of Defence (MOD) requirement for an FLC with high transit speed and high payload capacity whilst demonstrating excellent on-beach stability."

Made from aluminium for light weight and strength, BMT's specially developed FLC hull-form design allows:

- High-speed, heavy-payload operations (up to 28.5 knots fully fuelled and carrying four all-terrain vehicles, or up to 22 knots fully fuelled and carrying a main battle tank);
- Minimum speed loss in rougher seas (less than 1 knot speed reduction in Sea State 4);
- Excellent sea-keeping and manoeuvrability characteristics;
- On-beach stability.

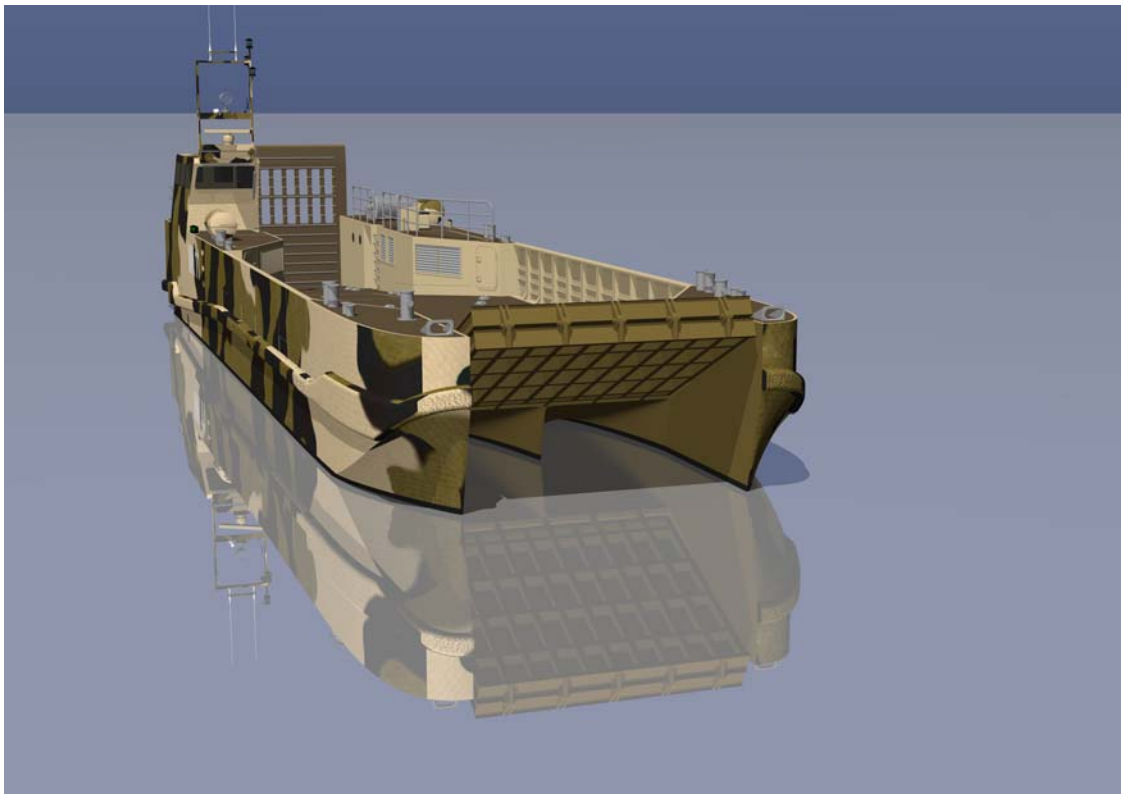


Other features include:

- Three high-speed MTU diesel engines coupled to waterjets, providing reliability and redundancy;
- Dependable, easily accessible machinery.

BMT has a pedigree in independent naval design, strong technical capability, proven record of innovation and extensive portfolio of designs, particularly for high-speed vessels. BMT was awarded this important MOD contract as part of a DE&S Design Solutions Study to determine viable hull forms to satisfy a FLC requirement.

The MOD will, as part of its FLC Concept Phase, conduct a cost and performance based appraisal of this design with other options determined in the FLC Design Solutions Study.



- Ends-



Notes to Editors

1) BMT Group Ltd

BMT is an international design, engineering and risk management consultancy, working principally in the defence, energy & environment, marine technical services, maritime transport and ports & logistics sectors.

BMT invests significantly in research. Its customers are served through a network of international subsidiary companies. The assets are held in beneficial ownership for its staff.

Website – www.bmt.org

2) BMT Nigel Gee Ltd

BMT Nigel Gee, based in Southampton, UK, is one of the world's leading independent design consultancies offering a vast portfolio of services for advanced and specialised ships and boats, from initial concept to detailed design. With an established background in yachts, commercial and naval craft, and an unrivalled scope of technical capability, the company utilises state of the art technology to provide innovative design and consultancy for an international client base.

Website - www.ngal.co.uk

3) BMT Defence Services Ltd

BMT Defence Services is the leading independent centre of naval design excellence and through-life support in Europe, with expertise in platform design for surface warships, submarines and auxiliaries. A wide range of government and industry customers engaged in the development of technically complex, highly integrated systems rely on BMT Defence Services for its systems engineering and information systems expertise. The company is based in Bath and Weymouth in the United Kingdom. It employs over 200 naval architects, marine engineers, engineering consultants and support staff.

Website – www.bmtdsl.co.uk



4) For further information and images, please contact:

Lorraine Emmett or Stephen Hooley

BMT Press Office

c/o Emmett & Smith

Tel: +44 (0)20 7819 4800

E-mail: lorraine.emmett@emmettandsmith.com

stephen.hooley@emmettandsmith.com