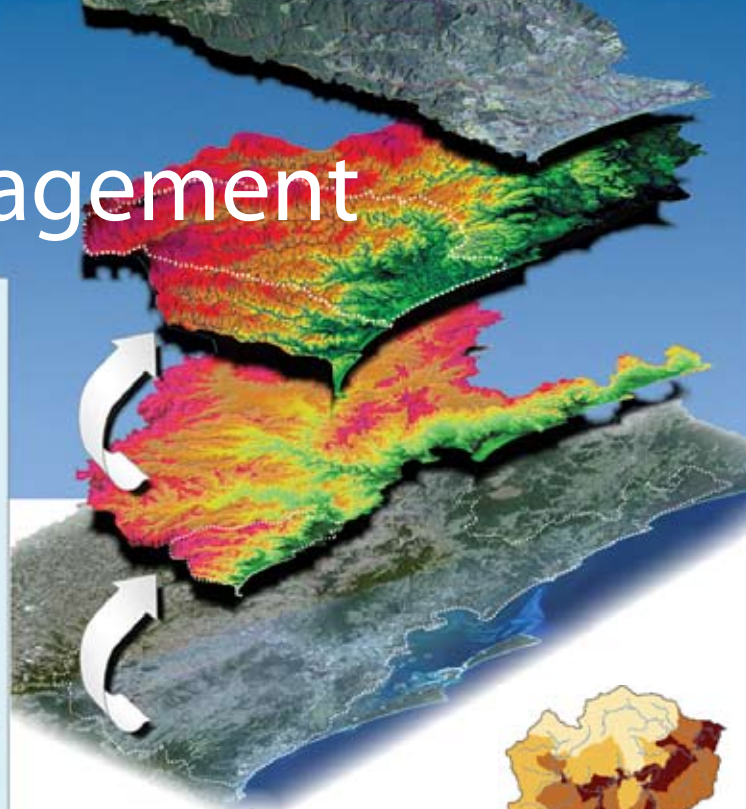
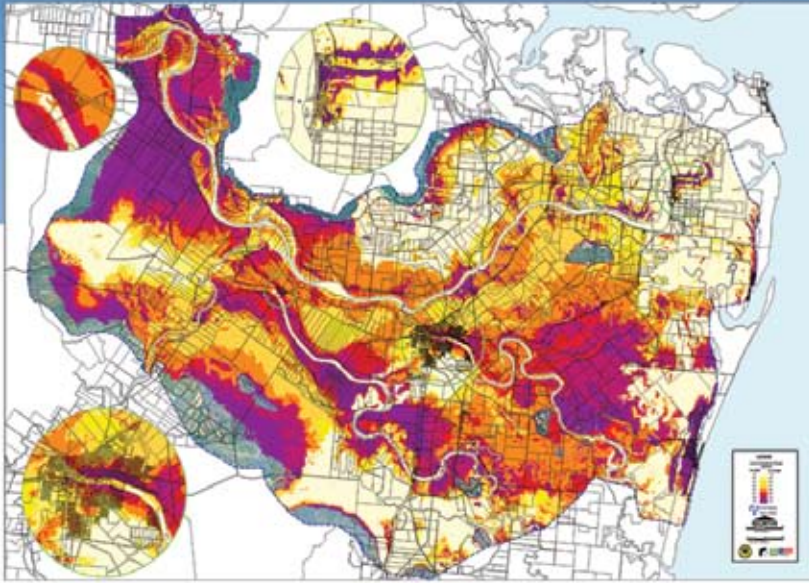


GIS and Data Management



GIS is widely applied to the recording, manipulation, analysis and presentation of spatial and temporal environmental data.

We specialise in routine and advanced GIS analyses, and regularly utilise these skills to support our high-quality and technically advanced numerical software applications.

We are experienced in carrying out GIS and data management studies for the private, government and industry sectors, with typical assistance being in the following areas:

- Interactive Web Based Mapping
- Catchment Management Studies
- Estuary Management Studies
- Environmental Resource and Habitat Mapping
- Noise and Air Quality
- Computer Contouring
- Coastal Resource Mapping
- Floodplain Mapping
- Thematic Mapping
- GIS Training
- GIS/CAD Data Capture
- Data Conversion
- Digital Terrain Models
- Spatial Referencing and Image Rectification
- Spatial Database Design
- Database Management

