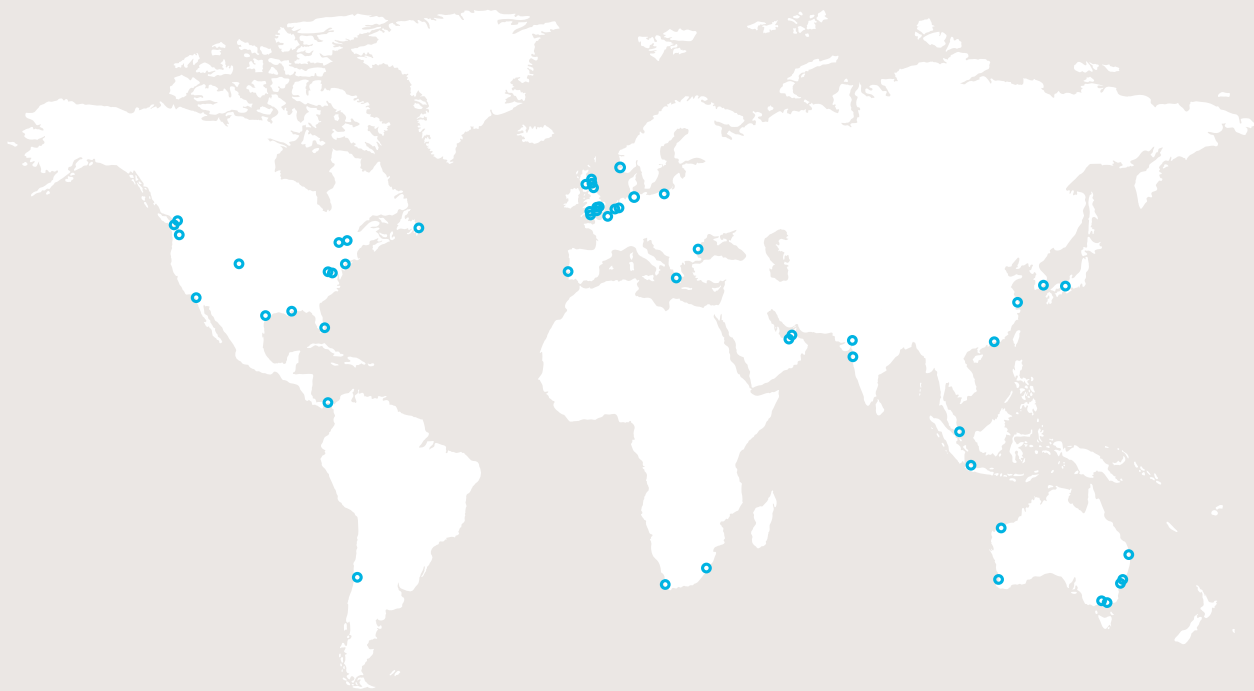


BMT Fleet Technology is an innovative leader in providing through-life engineering support from concept development through design, construction, operations, life extension/upgrade and disposal. The company employs its technological expertise and practical experience to provide services to clients in the Marine, Defence, Energy & Environment, Civil & Industrial Infrastructure, and Transport industry sectors. We are committed to retaining and applying practical knowledge of sector-specific factors in developing responsive solutions to customer's needs. The company's hallmark of engineering excellence involves the provision of leading edge structural and mechanical system damage assessment, materials and welding engineering, inspection and maintenance management, naval architecture and marine engineering, environmental and cold regions engineering services.



Head Office

311 Legget Drive
Kanata, ON, Canada, K2K 1Z8
Tel: 613-592-2830
Email: fleet@fleetech.com

St. John's

25 Kenmount Road
St. John's, NL, Canada, A1B 1W1
Tel: 709-753-5690
Email: NL@fleetech.com

Vancouver

611 Alexander Street, Suite 412
Vancouver, BC, Canada, V6A 1E1
Tel: 604-253-0955
Email: west@fleetech.com

Victoria

Shoal Point, 101-19 Dallas Road
Victoria, BC, Canada, V8V 5A6
Tel: 250-598-5150
Email: west@fleetech.com

United Kingdom - Loughborough

The Point, Granite Way, Mountsorrel
Loughborough, Leicestershire, UK, LE12 7TZ
Tel: +44 (0)1509 621814
Email: UK@fleetech.com

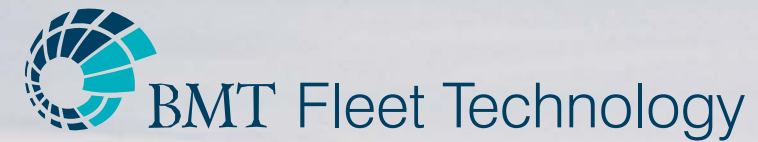
United Kingdom - Fareham

12 Little Park Farm Road
Fareham, Hampshire, UK, PO15 5SU
Tel: +44 (0)1489 553 200
Email: UK@fleetech.com

Web: www.fleetech.com

Or contact us through any of our sister BMT companies with over 60 offices worldwide to serve you.

Certified to ISO 9001:2000, we are dedicated to ongoing quality and management systems.



Taking Control of Your Environment



Planning and Design

BMT Fleet Technology has the knowledge to help you navigate today's environmentally sensitive regulatory environment. We know that early involvement in your planning process helps to identify potential environmental impact issues which can then be designed out or mitigated and ease the government approvals process.



Developing Greenfields

We understand the challenges of greenfield site development, be it for residential, commercial, or industrial use. BMT's environmental professionals can help minimize these challenges by identifying potential project related environmental impacts, proposing both reasonable and cost effective solutions, and supporting your planning application throughout the entire approvals process. At BMT we take our client's interests to be our own and will stand by you until the project is completed.

Resolving Impacts

Whatever the identified impact, BMT has the professional knowledge to find a sustainable solution. With a diverse team of scientists and engineers available to you, BMT can provide the answers you need to keep on schedule and on budget. Our knowledge is our strength and our diversity allows for a multi-disciplinary approach to solve even the most complex problems.

Presenting Data

Presenting the data is often as important as the data itself. At BMT we have a dedicated team of GIS professionals who can take the project data and generate presentations that add value. Whether it is modelling results or land use planning information, we will generate quality graphics to support both reports and public consultation.

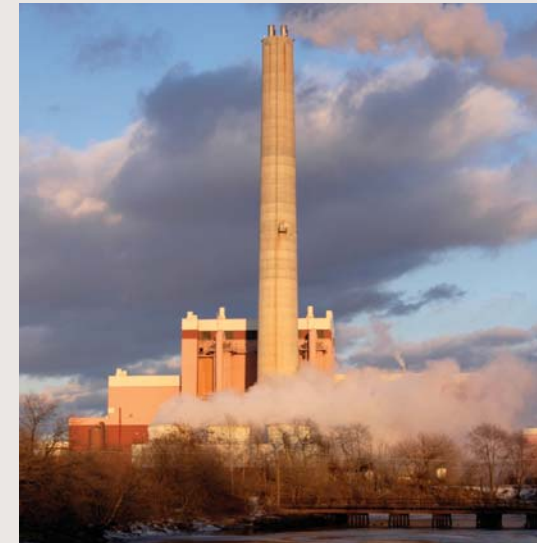
Team Skills

- Noise assessments
- Air quality assessments (industrial and marine)
- Groundwater supply/management studies
- Surface water supply/management studies
- Wetland management
- Wildlife management
- Public consultation
- Social and economic impact assessments
- Environmental permitting



Operations and Change

Compliance, expansion, redevelopment of a brownfield site - where is your business going? At BMT we recognize the dynamic nature of business, and know that to plan successfully, you need information and advice you can depend on. After all, planned change is always more cost effective than reacting to unforeseen events.



Managing Risk

Are you, as a company, meeting your legal environmental obligations? How about that company you're looking to acquire? Are there historic problems that are impacting your site, or worse, your neighbour's site, without your knowledge? How could you know? The answers of course are never simple, but legally, the responsibility is yours.

Noise, air quality, wastewater, storage tanks & piping, asbestos, PCBs, waste disposal, etc., are but a few aspects of your operations that can lead to environmental problems. Each poses its own set of risks which, with the right knowledge and support, can be easily managed in-house. Through an analysis of your operations, our professionals will identify existing risk areas, and provide you with the knowledge you need to address them. At BMT we believe that knowledge transfer is essential to the formulation and implementation of sustainable environmental management strategies.

Designing Solutions

Site based environmental problems exist, whether recent or historic and once identified, they need to be addressed. Regardless of the matrix, soil, water or air, BMT can design a remedial solution that makes sense for your operation. We'll work with you through every phase of the problem resolution, doing as much (implementing the complete job) or as little (contractor oversight) as necessary.

Team Skills

- Environmental compliance and risk assessments
- Phase I, II, & III site investigations
- Groundwater supply & contamination studies
- Soil and groundwater remediation strategies
- Noise studies & abatement strategies
- Air quality and odour assessments
- Water & wastewater treatment
- Ballast water management / treatment
- Combustion air monitoring / treatment

